

Norton[®]

MOTORCYCLES

COMMANDO

961 RANGE





Norton®

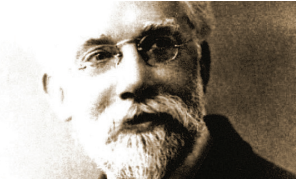
WORLD CLASS MOTORCYCLES

British at Heart

Welcome to the official Norton Commando 961 information brochure for the Commando 961 SF, Café Racer and Sport motorcycles.

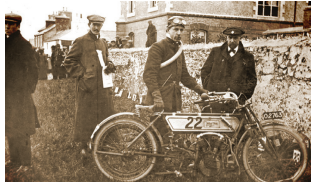
NORTON THE BRAND

A journey through the history of Norton Motorcycles



The Norton company was founded in 1898 by James Pa Lansdowne Norton

1898



Nortons first TT winner

1907



Norton Motorcycle tanks bear today's famous logo

1916

The Norton Model 18

1925



Guthrie starts the 1935 Senior TT

1935



Geoff Duke

1952

1902

First Norton Motorcycle produced

1904

First Norton engined bike produced

1909

Pa Norton with the model which first retailed in Harrods



1930's

Nearly 4,000 road bikes produced annually

78 out of 92 Grand Prix victories

10 Isle of Man Senior TT wins

1949

Introducing the twin cylinder Dominator

1950-1

Featherbed frame succesfully developed for Norton and was used on the Dominator and other Café Racers



The Norton Commando 750

1970

Norton returns to racing in emphatic style. The all-black JPS bike wins 1989 British Superbike Championship with Steve Spray emulated by Ian Simpson in 1994 on the Duckhams Norton

1989



Steve Hislop's all-white ABUS Norton defeated Carl Fogarty's Yamaha to win the Isle of Man Senior TT, the first victory there by a British bike for almost 30 years

1992



Norton Motorcycles return to production. Following the success of the Commando 961SE, Café Racer and Sport hit the production line

2010

1961

Commando introduced at the Earls Court Motor Show. Over 50,000 produced and sold over the next decade

1976

Driven to the brink of extinction alongside other great British marques, the last Commando was produced

1991

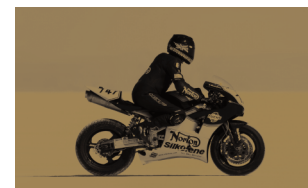
Trevor Nation on a JPS Norton



2009

Norton CEO Stuart Garner, sets the World Speed Record for a rotary powered motorcycle on the Norton NRV588.

Timed mile - 173mph
Top Speed - 180+ mph



2012



Norton return to the Isle of Man to race the TT with SG1

COMMANDO 961 SF



COMMANDO 961 SF

Motorcycle specification

POWER ASSEMBLY

Engine type	In house developed parallel twin with dry sump lubrication
Displacement	961cc
Cooling system	Air
Valve actuation	Push rod, hydraulic lifter, 2 valves per cylinder
Bore x stroke	88mm x 79mm
Compression ratio	10.1:1
Power	80PS @ 6500RPM
Torque	90Nm @ 5200RPM
Exhaust	Black Sports Exhaust
Ignition	Crank fired electronic Euro 3 compliant with electronic fuel injection and multiple 2 way catalytic converters

TRANSMISSION

Gear box	Constant mesh 5-speed
Final drive	525 "O" ring chain
Clutch	Wet multi-plate
	Electric start

HYDRAULICS & BRAKES

Front brakes	Full Brembo system, twin Brembo 320mm fully-floating high carbon stainless steel discs & Brembo 4 piston "Gold Line" radially mounted callipers. Brembo "Gold Line" front brake master cylinder with integral reservoir
Rear brakes	Full Brembo system, single Brembo 220mm disc & Brembo 2 piston "Gold Line" calliper. Brembo rear brake master cylinder
Clutch	Brembo hydraulic clutch master cylinder with integral reservoir and Brembo slave cylinder

ELECTRONICS & CONTROLS

Charging system	300 watt hi-output charging system
Instrumentation	Norton electronic analogue speedo and tachometer





FRAME

Frame	Steel tubular with integral oil tank
Swing arm	Twin-sided steel construction
Wheelbase	1420mm (55.9 in)
Rake	24.5°
Trail	99mm (3.9 in)
Front suspension	43mm Ohlins USD - adjustable preload, compression & rebound damping
Rear suspension	Ohlins twin shocks with remote reservoir - adjustable ride height, preload and compression
Front wheel	36 spoke 3.50 x 17" Black Rim
Rear wheel	40 spoke 5.5 x 17" Black Rim
Front tyre	120/70 x 17"
Rear tyre	180/55 x17"
Front wheel travel	115mm (4.53 in)
Rear wheel travel	100mm (3.94 in)

MISCELLANEOUS

Fuel tank capacity	17 litres (4.5 US gallon)
Dry weight	188kg (414.5 lbs)
Seat height	813mm (23 in)
Steering	Machined billet yokes
Handlebars	Tapered black bars
Bodywork	Fly-Screen

AVAILABLE COLOURS

Black / Gold Red / Gold

Silver / Red / Black



All Norton Motorcycles are hand-built in the Norton factory at Donington Park Grand Prix Circuit, Great Britain





COMMANDO 961 CAFÉ RACER



COMMANDO 961 CAFÉ RACER

Motorcycle specification

POWER ASSEMBLY

Engine type	In house developed Parallel twin with dry sump lubrication
Displacement	961cc
Cooling system	Air
Valve actuation	Push rod, hydraulic lifter, 2 valves per cylinder
Bore x stroke	88mm x 79mm
Compression ratio	10.1:1
Power	80PS @ 6500RPM
Torque	90Nm @ 5200RPM
Exhaust	Café Racer Sports Exhaust
Ignition	Crank fired electronic Euro 3 compliant with electronic fuel injection and multiple 2 way catalytic converters

TRANSMISSION

Gear box	Constant mesh 5-speed
Final drive	525 "O" ring chain
Clutch	Wet multi-plate
	Electric start

HYDRAULICS & BRAKES

Front brakes	Full Brembo system, twin Brembo 320mm fully-floating high carbon stainless steel discs & Brembo 4 piston "Gold Line" radially mounted callipers. Brembo "Gold Line" front brake master cylinder
Rear brakes	Full Brembo system, single Brembo 220mm disc & Brembo 2 piston "Gold Line" calliper. Brembo rear brake master cylinder
Clutch	Brembo "Gold Line" hydraulic clutch master cylinder. Brembo hydraulic clutch actuation slave cylinder

ELECTRONICS & CONTROLS

Charging system	300 watt hi-output charging system
Instrumentation	Norton electronic analogue speedo and tachometer

